

00069

ITINERARIO TOPOGRAFICO

DE

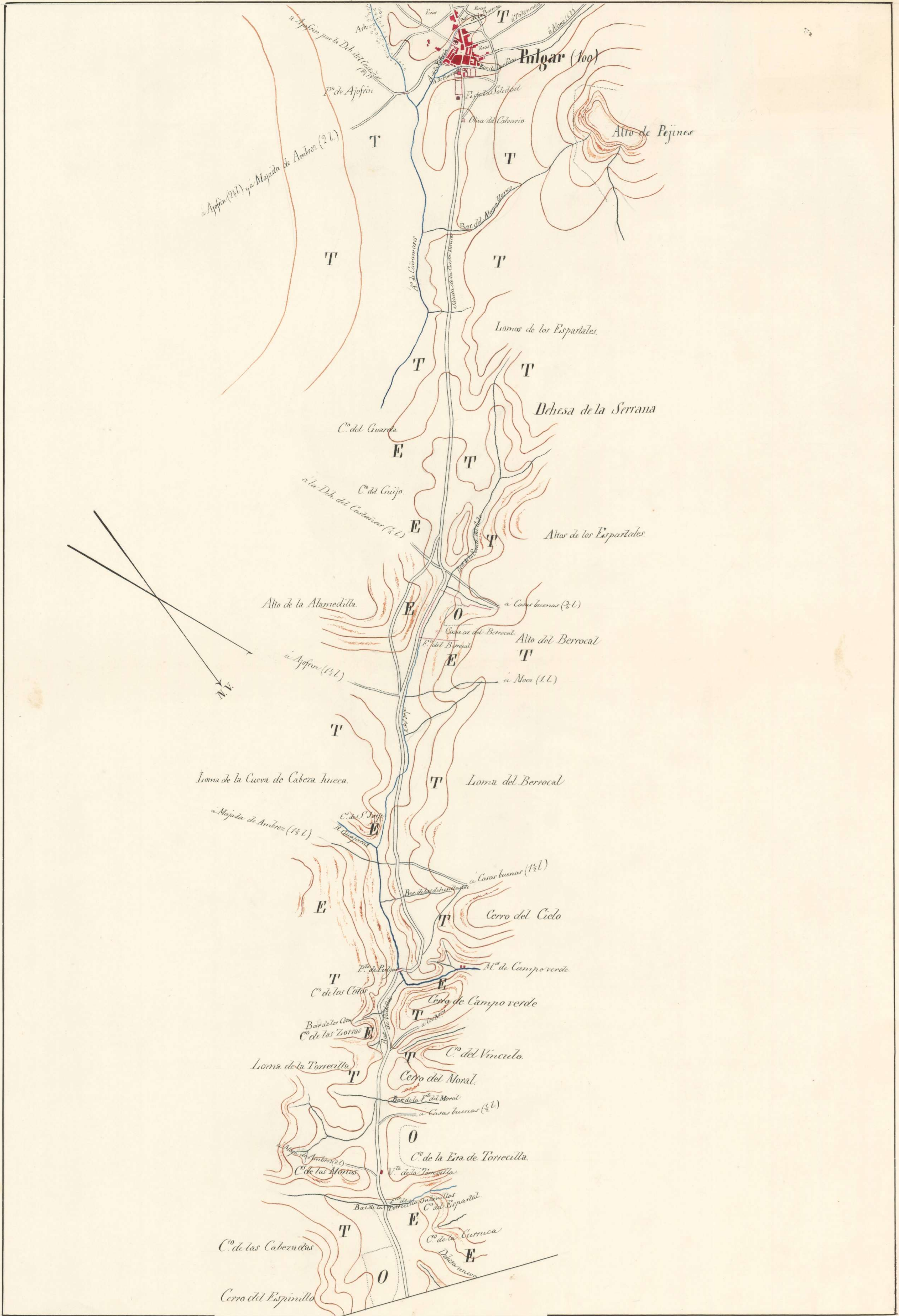
TOLEDO A CORDOBA PASANDO POR ALMADEN

LEVANTADO

por los Capitanes del cuerpo de E. M. del Ejercito

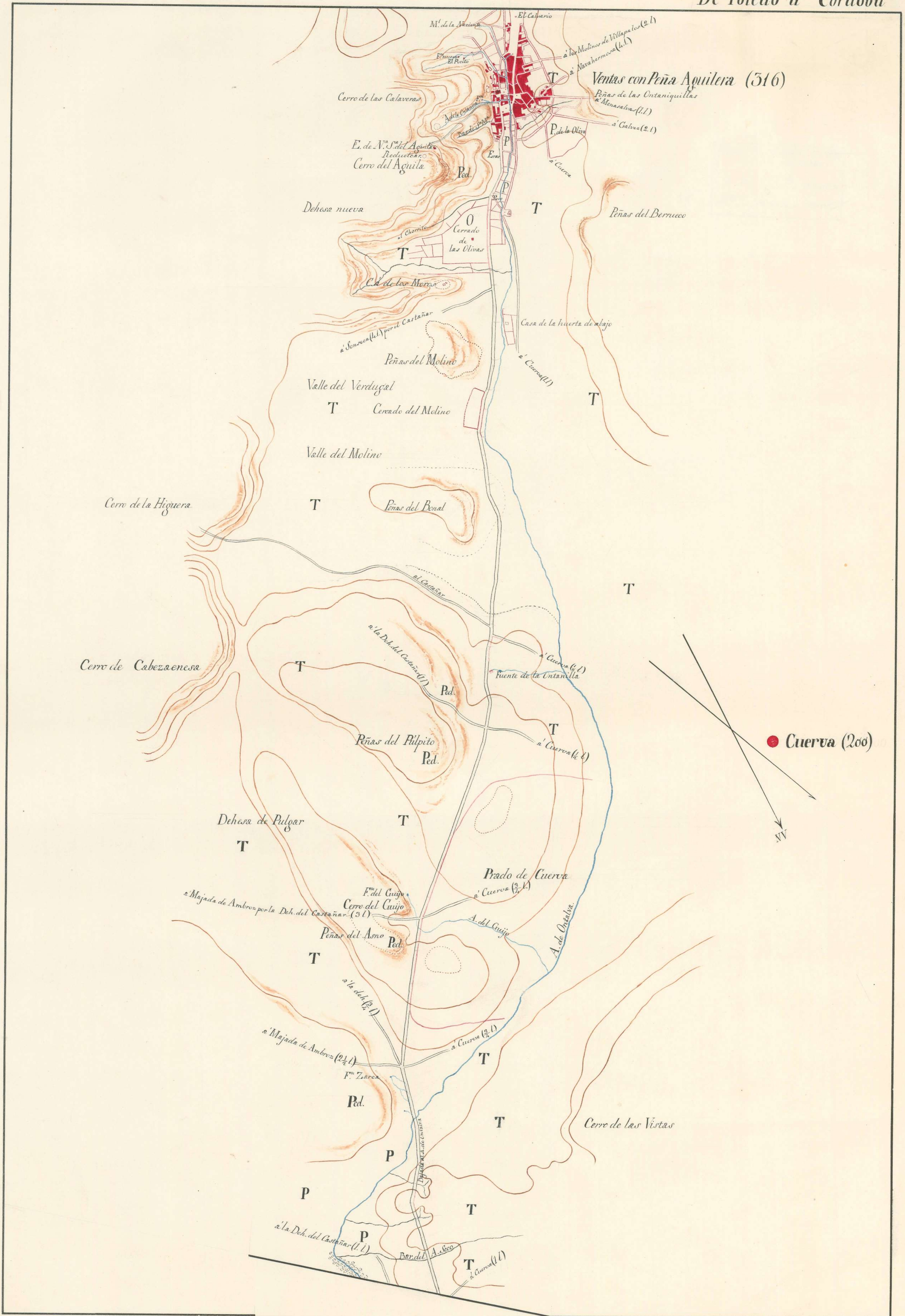
D^o José de Chessa y Garcia y D^o Juan O'Leary y Cuballero

Año de 1855.



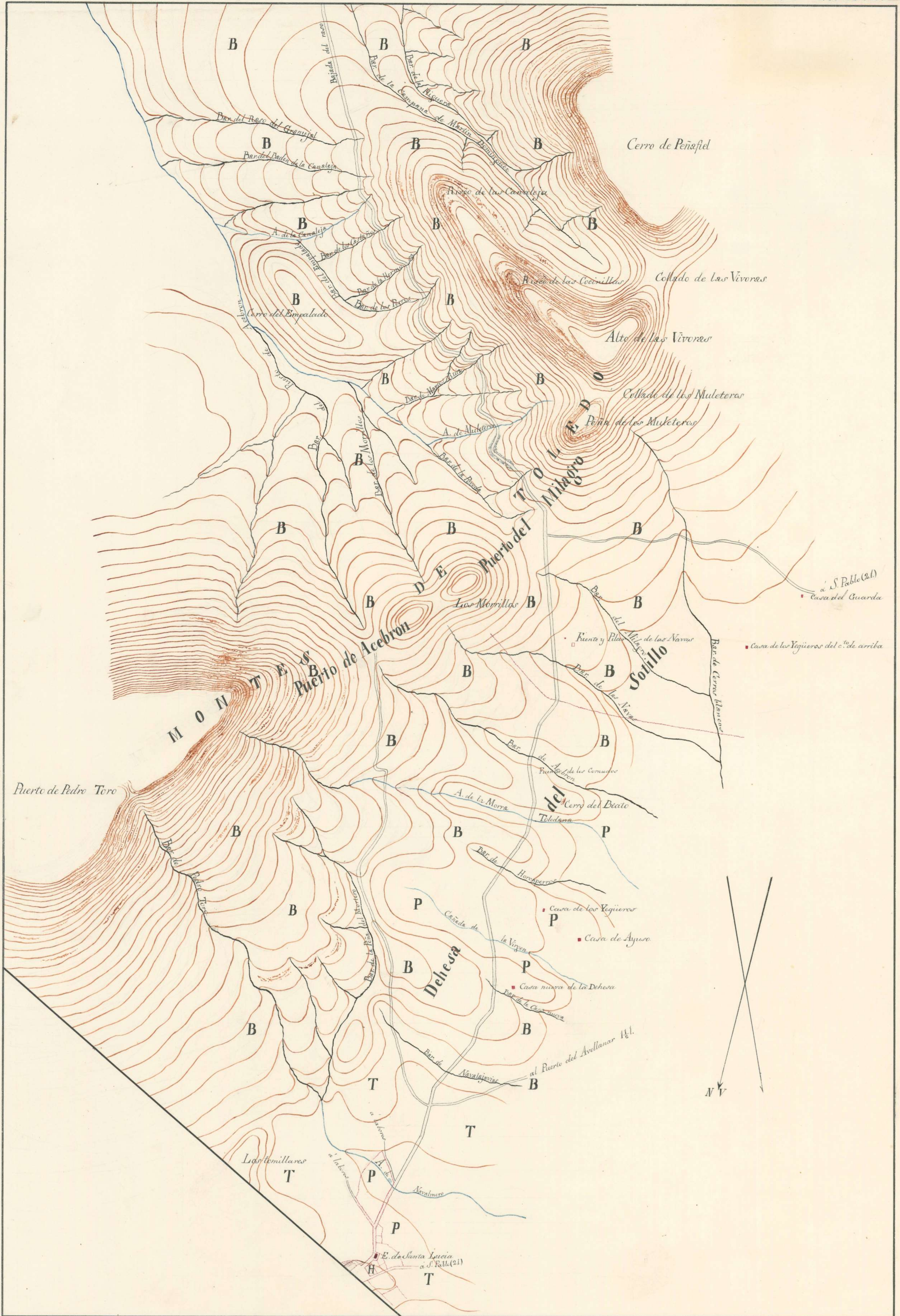
Juan O'Leary

Juan O'Leary



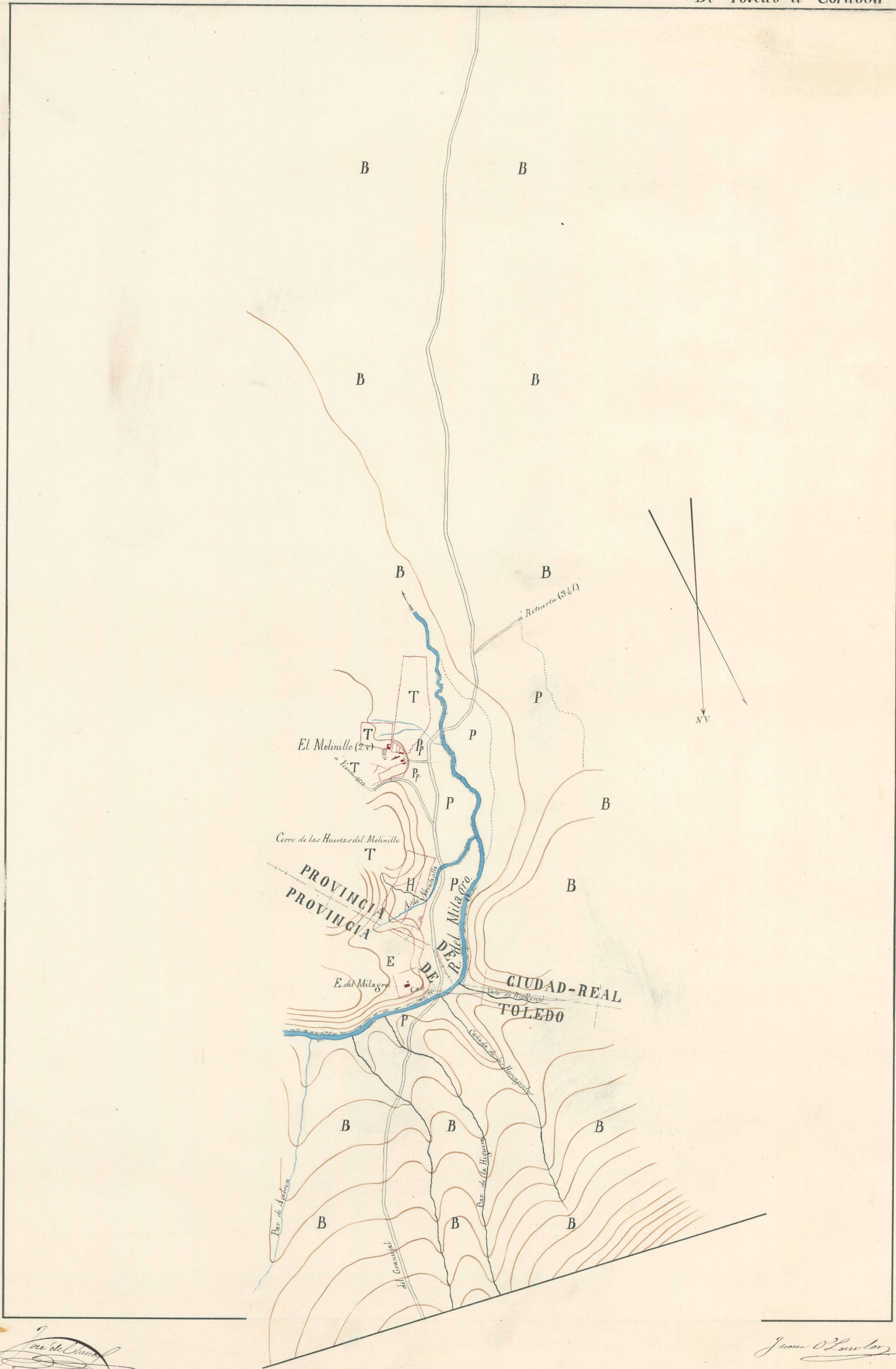
Juan de Caceres

Juan de Llanes



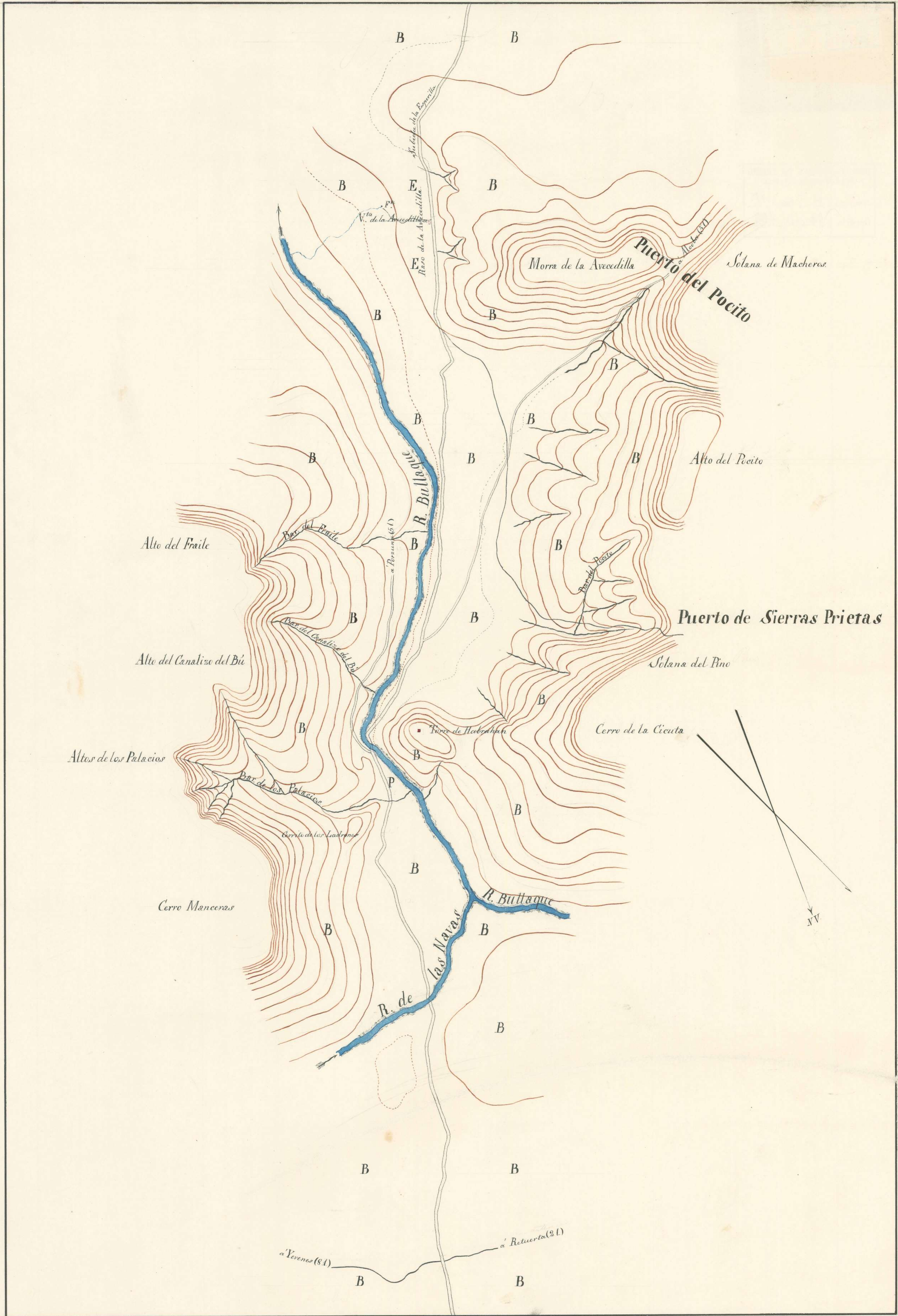
Escuela de Ingenieros
[Signature]

Juan O'Leary
[Signature]



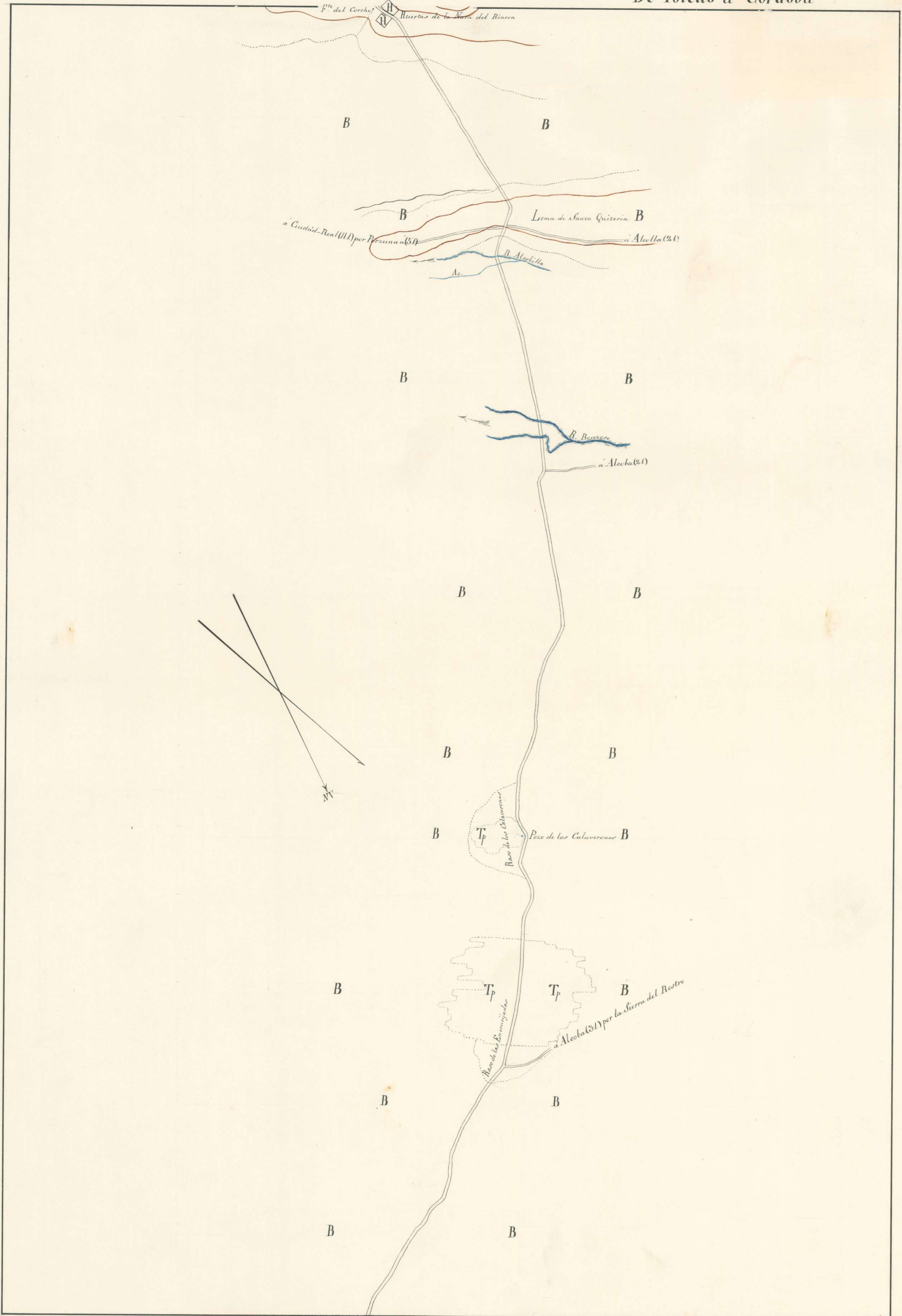
Juan de Luna

Juan O. L. ...



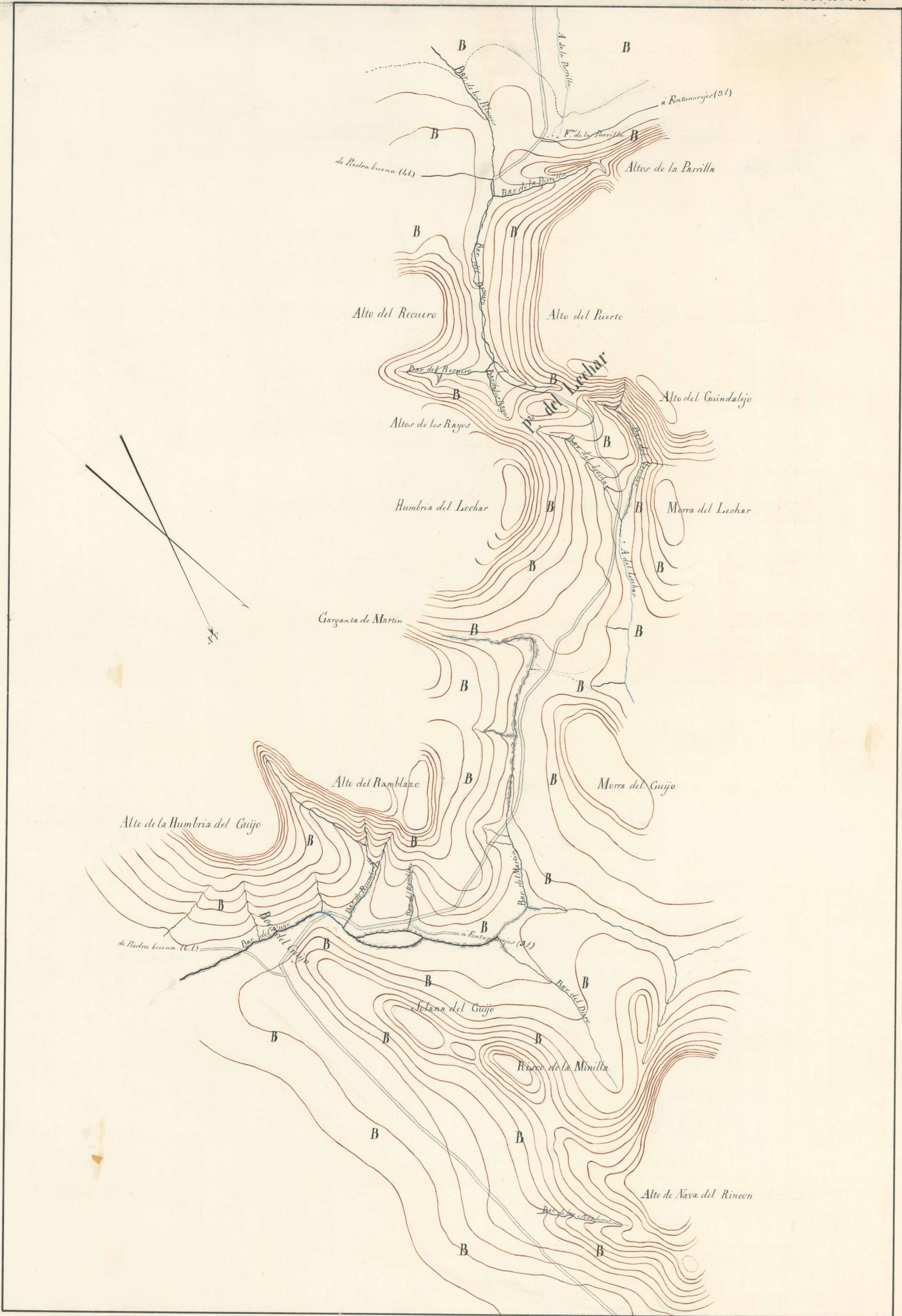
José de Guzmán

Juan O'Harro



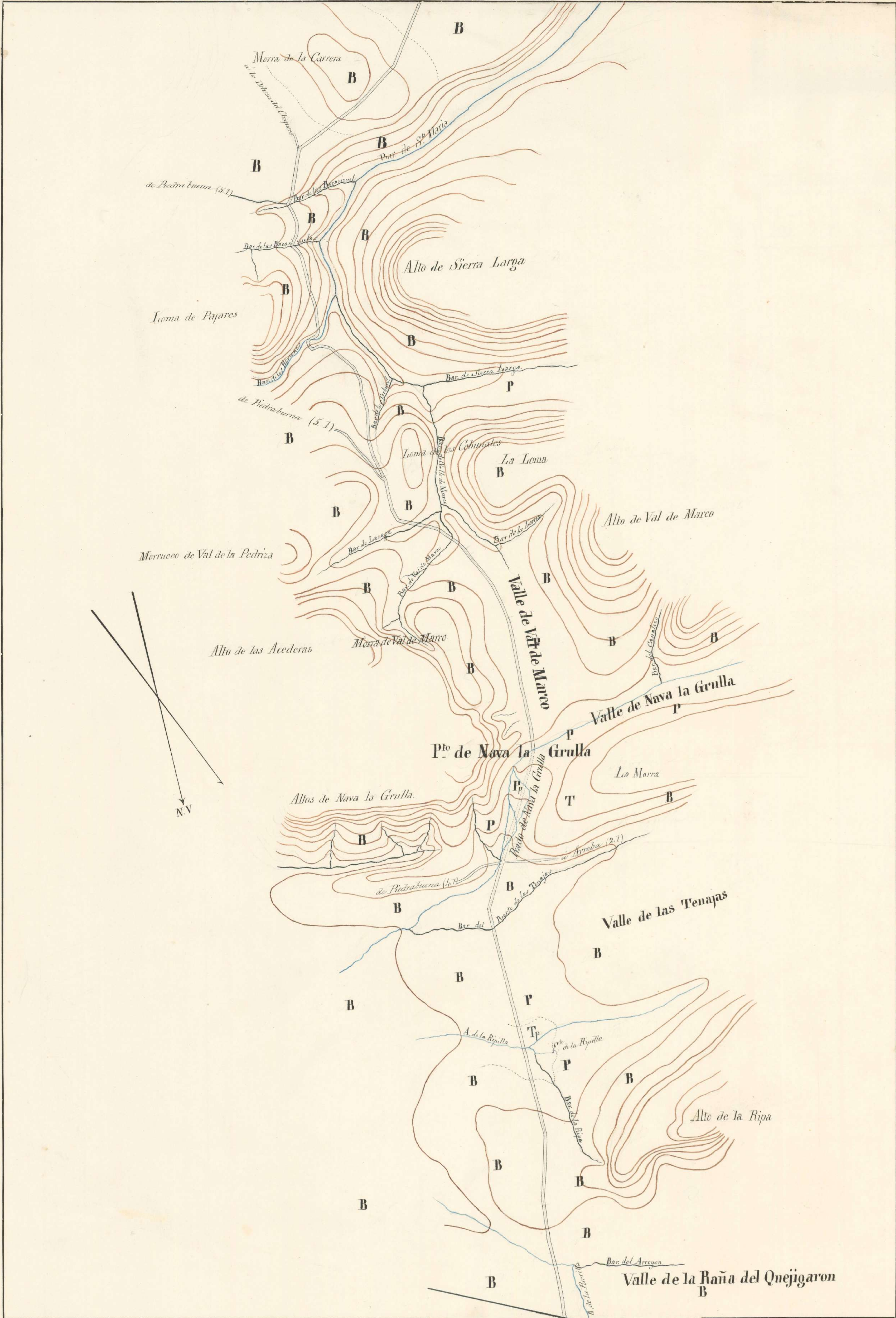
Juan de Caceres

Juan O'Lasola



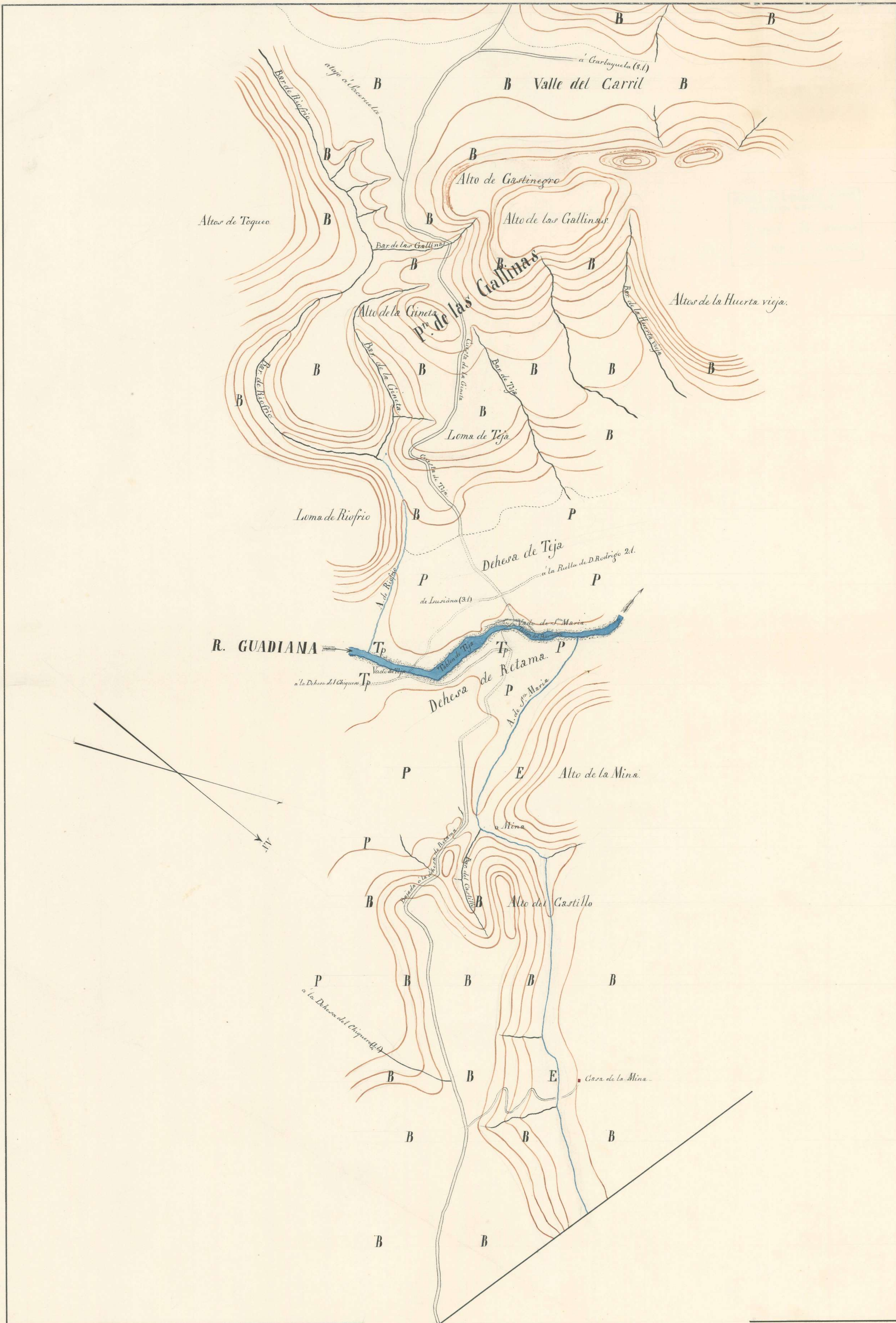
Juan de Caceres

Juan de Caceres



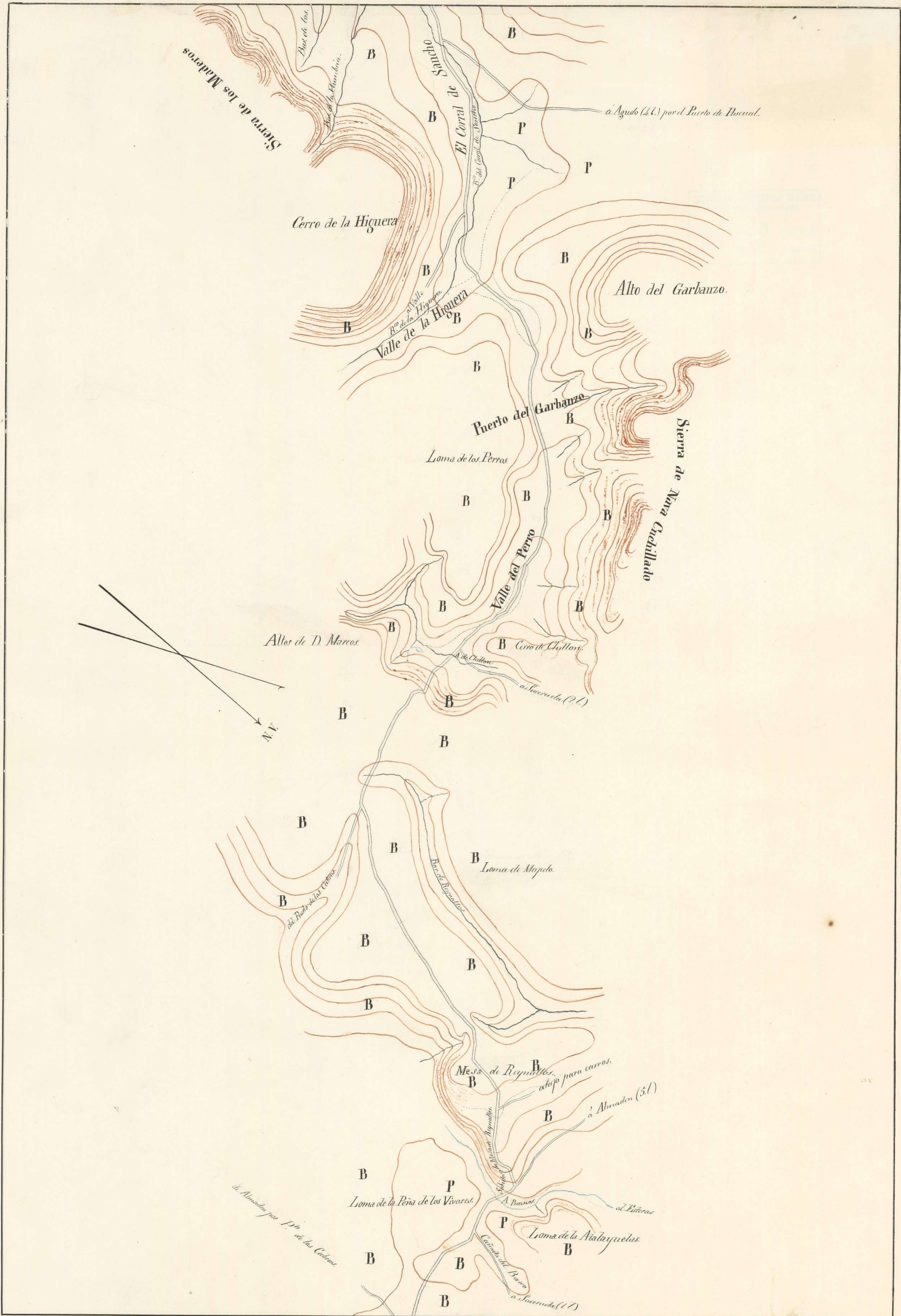
Juan de Blasquez

Juan de Blasquez



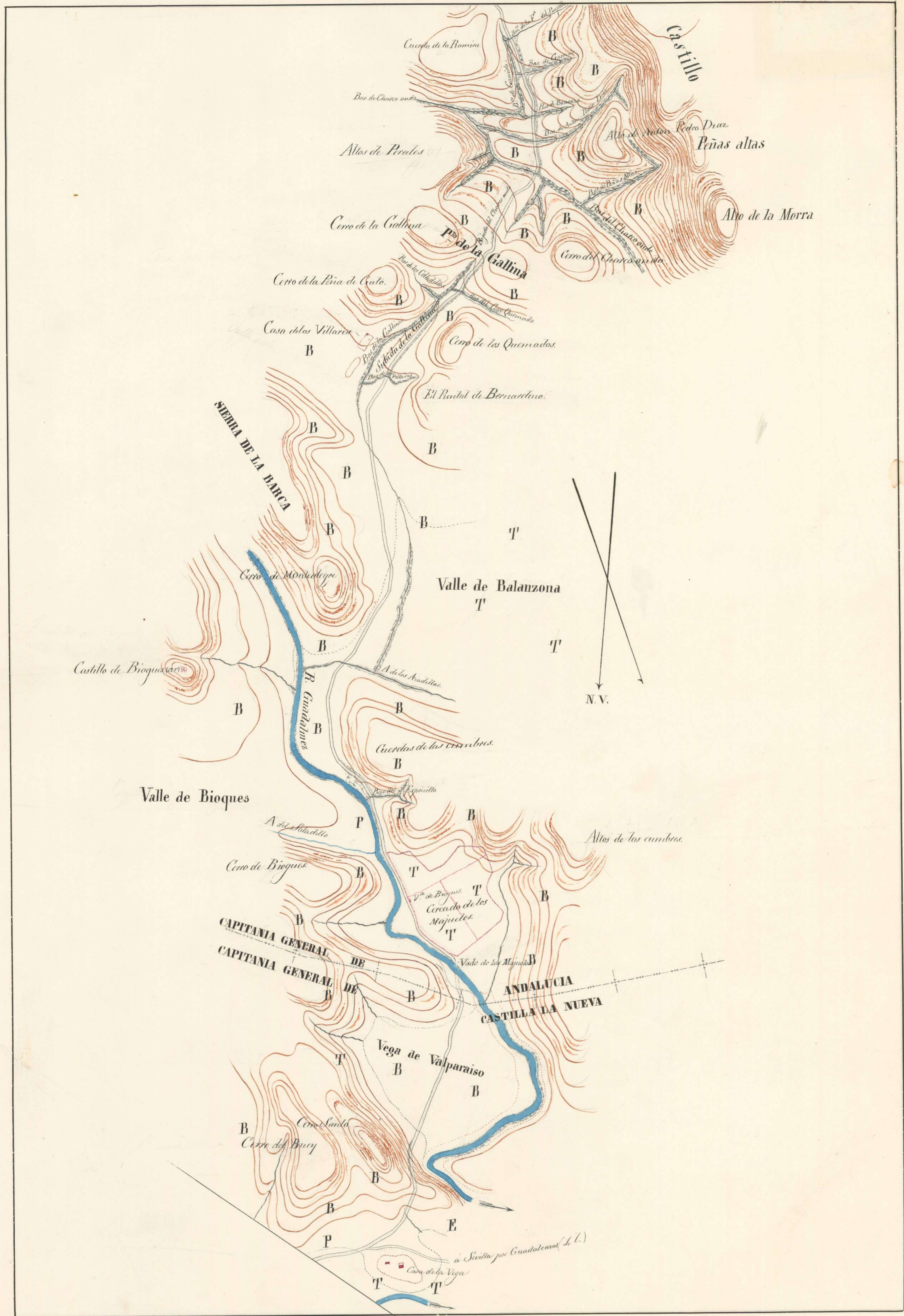
J. de la Cruz

Juan Ochoa



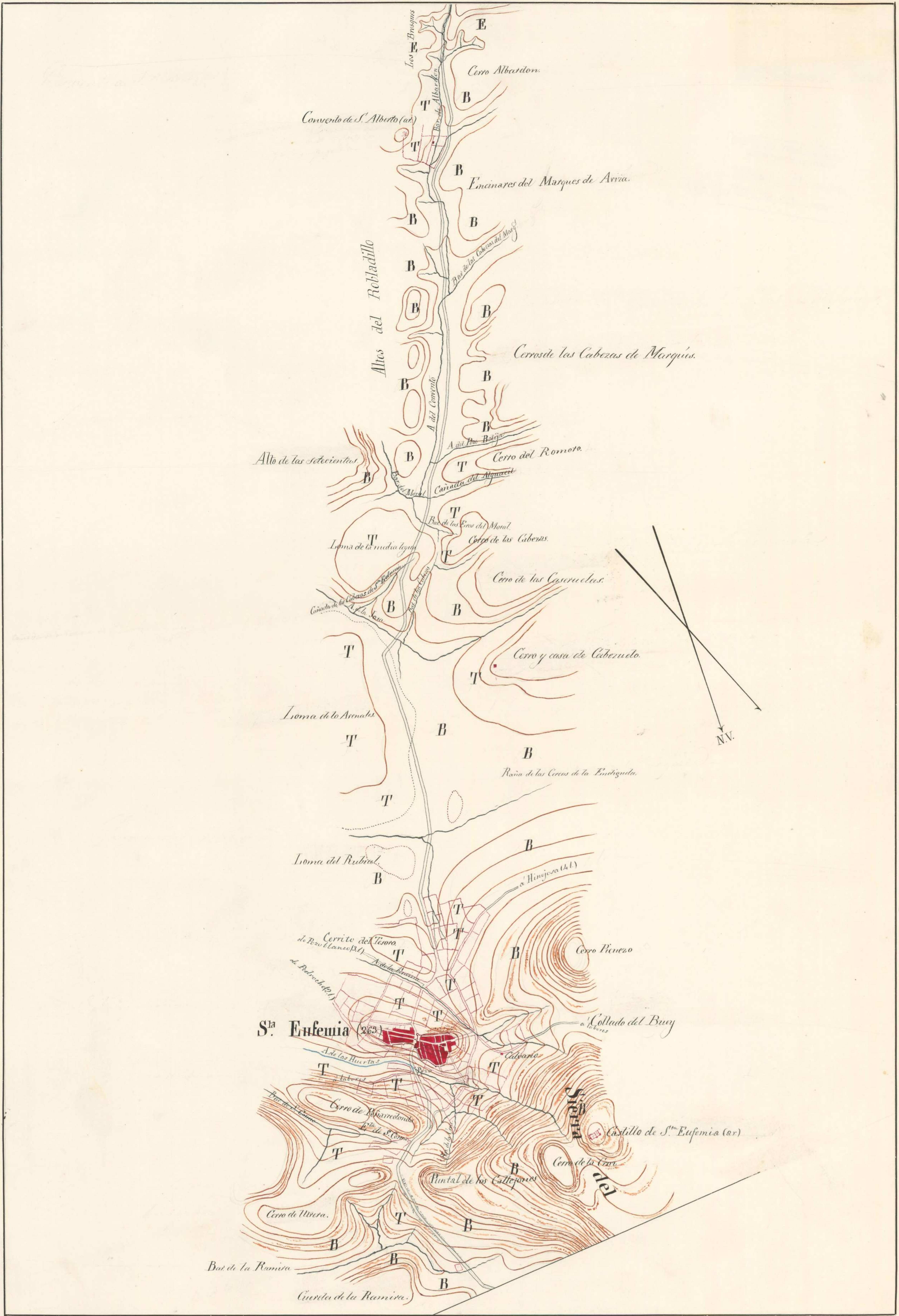
José de Chaves

Juan Sastre



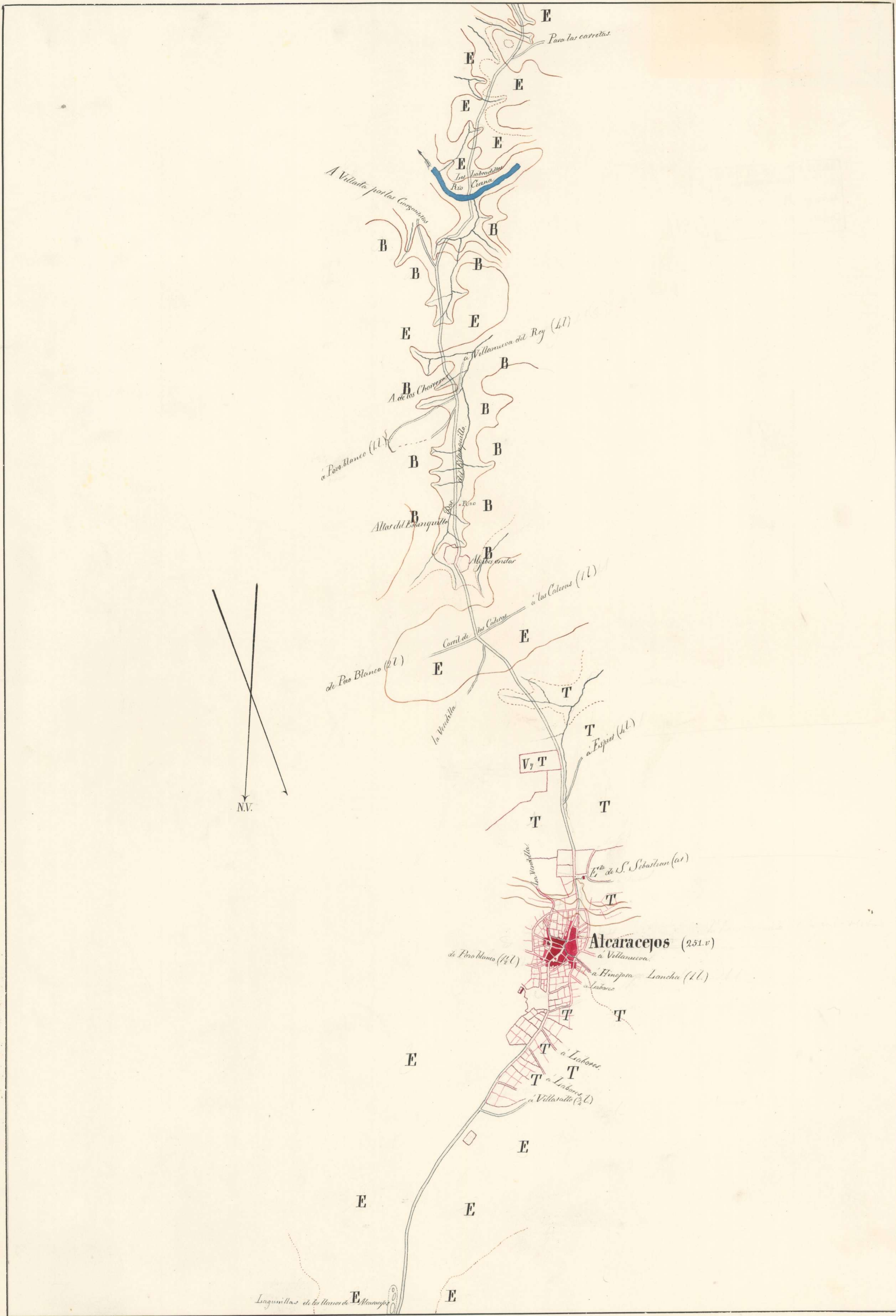
J. de la Cruz

Juan C. Santos



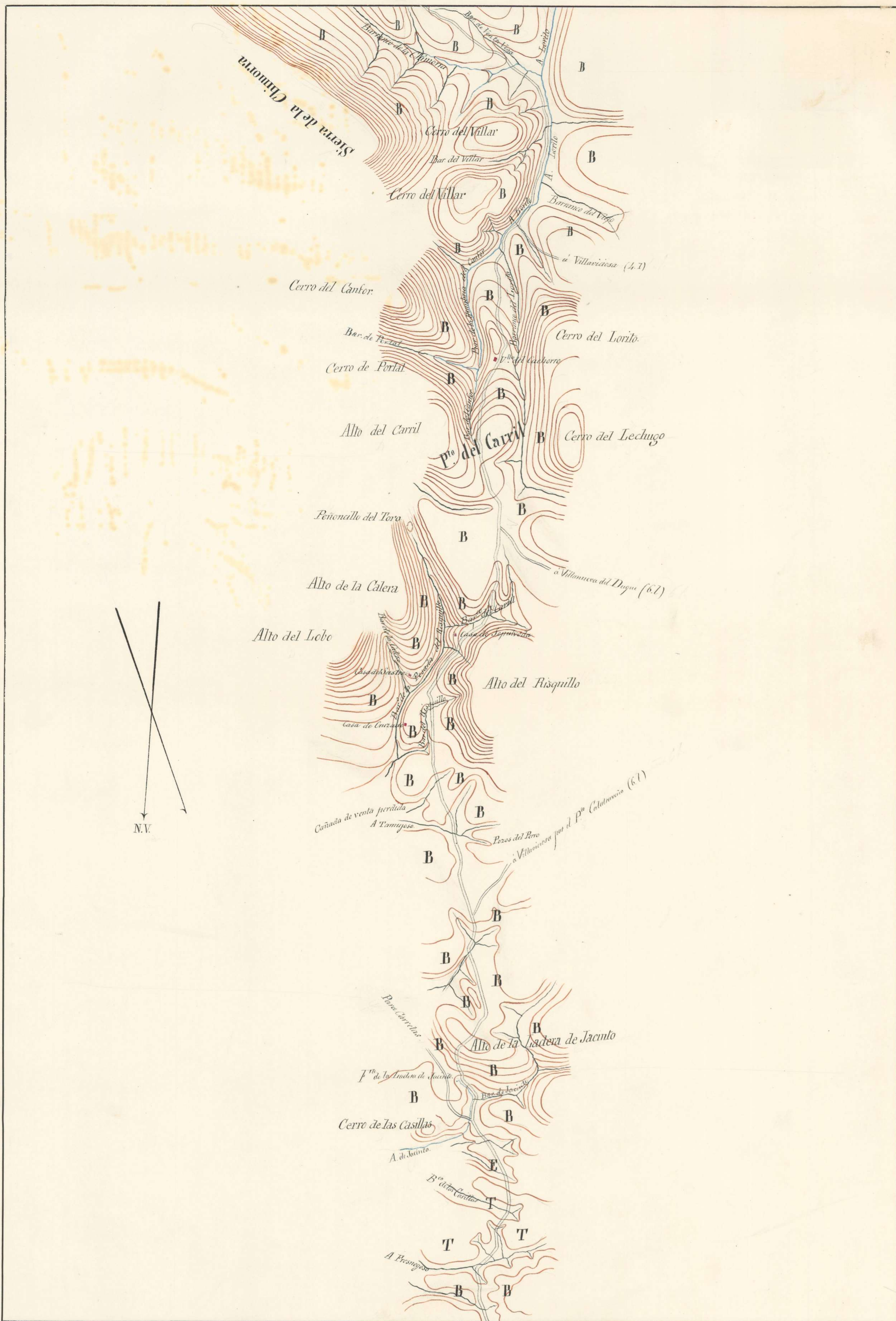
José de Bustos

Juan O. Larrea



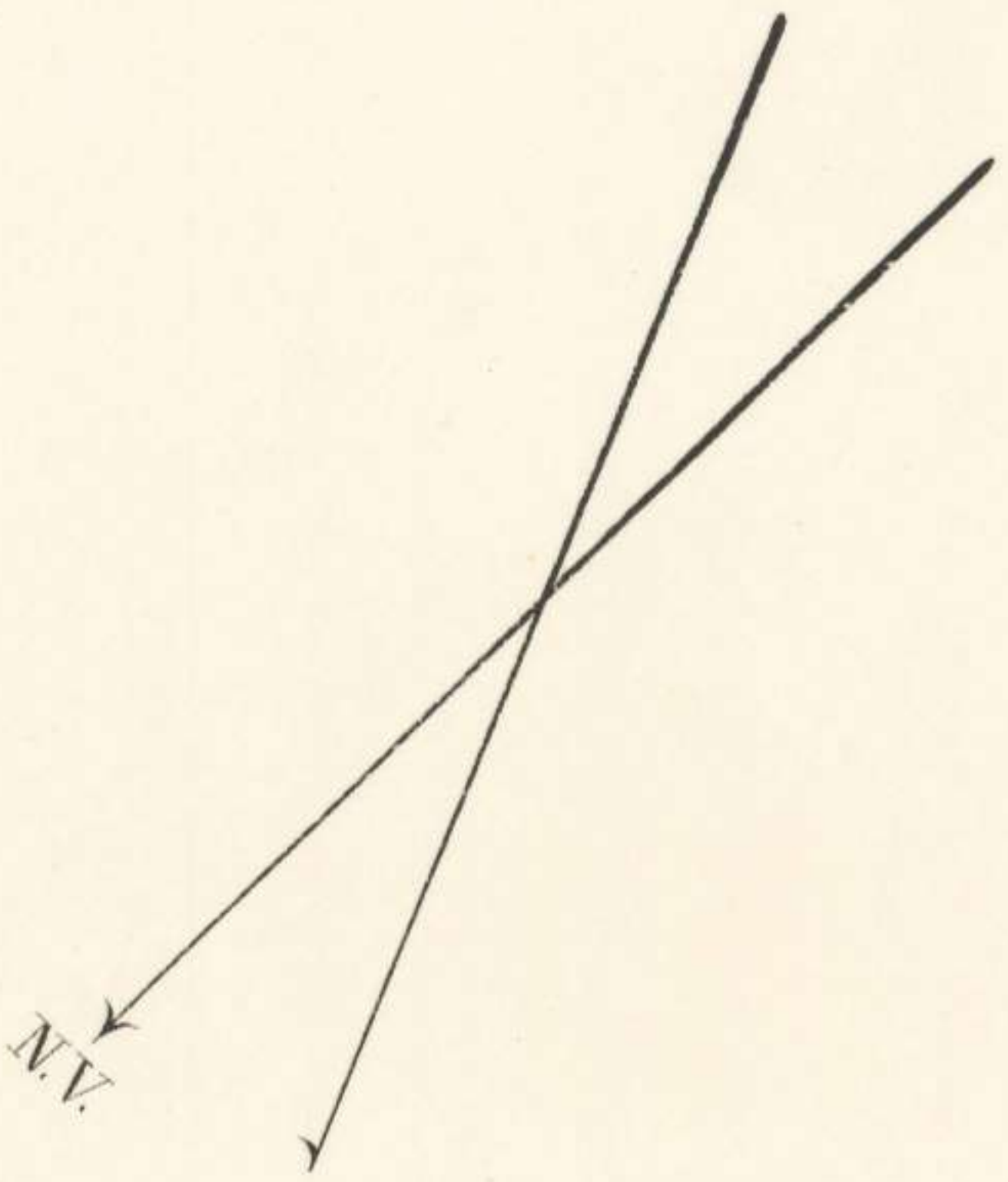
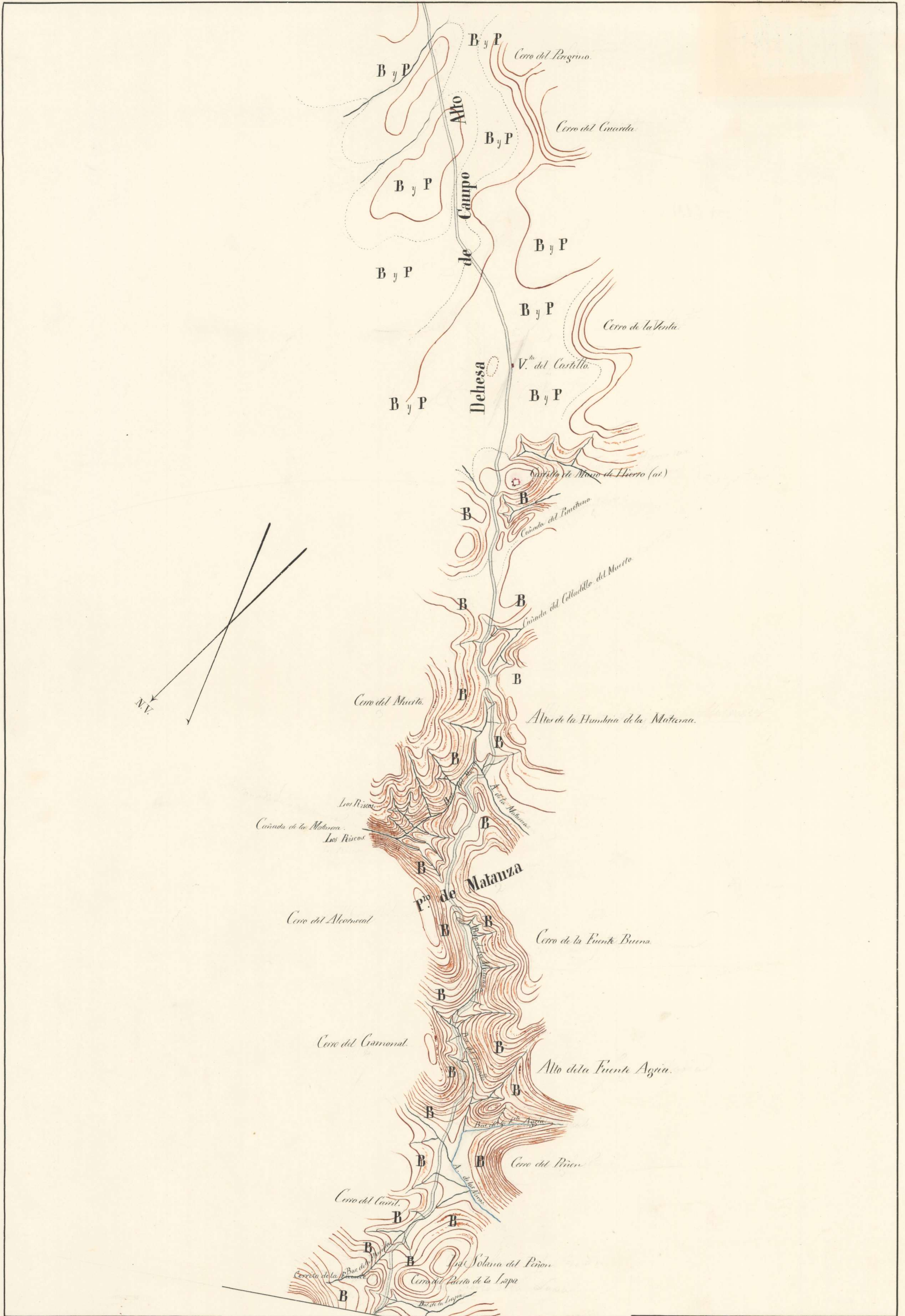
José de Colina

Juan O'Lawlor



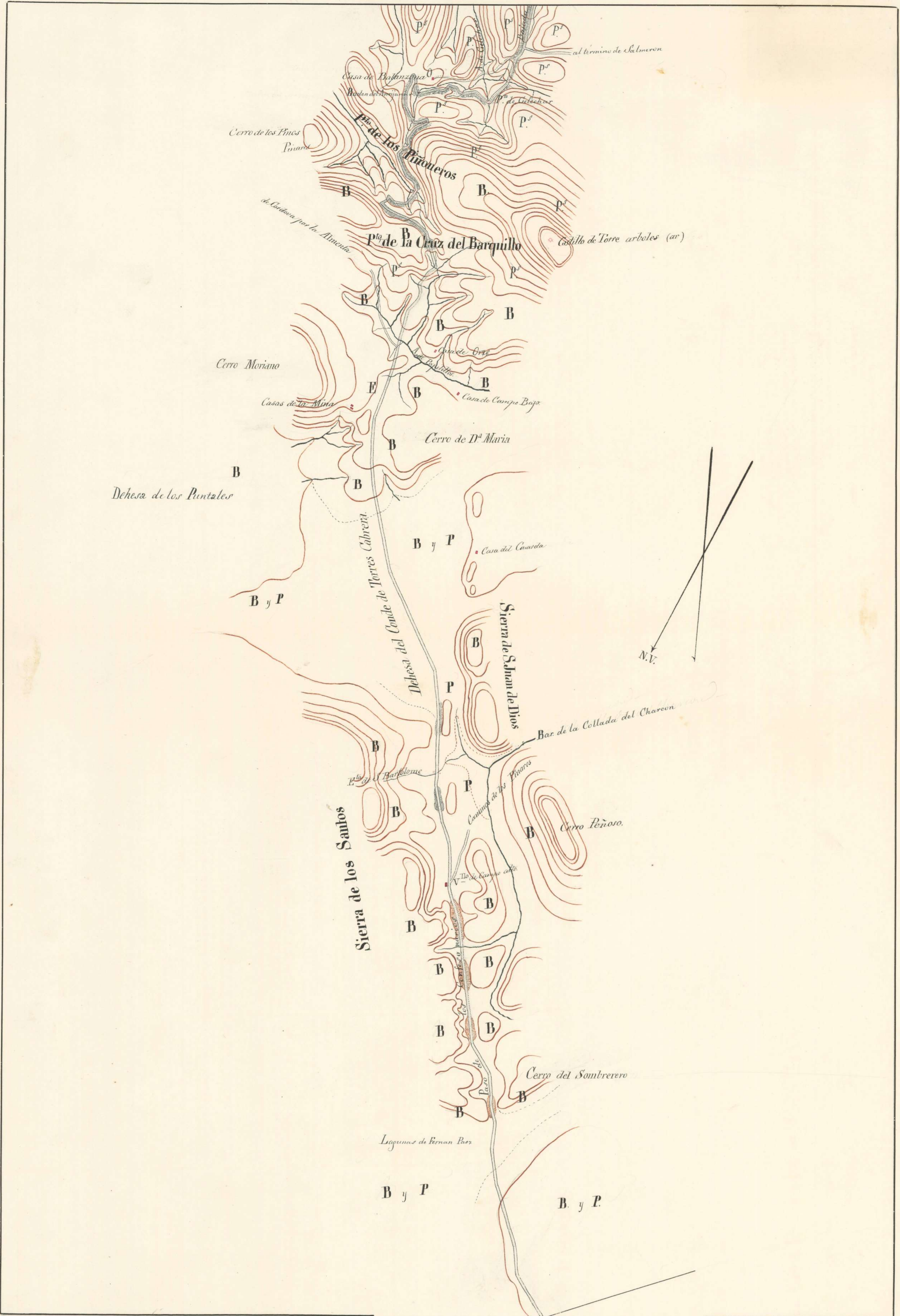
José de Ojeda

Juan L. L...



Juan de Blas

Juan O'Leary



José de Cárlos

Juan O'Leary

